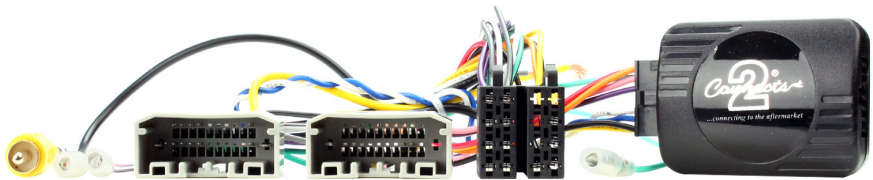




...connecting to the aftermarket

CTSCH005.2

Chrysler, Dodge, Volkswagen
Steering Wheel Control Interface



Vehicle Application

Chrysler Town & Country 2008 - 2017

Dodge Grand Caravan 2008>

Volkswagen Routan 2011 - 2013

Key Features

- Retains Steering Wheel Controls (if equipped)
- Retains OEM Reverse Camera (if equipped)
 - Retains OEM Phone Buttons (if equipped)
- Provides Park Brake, Reverse Gear & Speed Pulse

www.connects2.com

Designed and
Engineered
in the UK. 

The information provided in this document is subject to change without notice due to changes and/or improvements to the product/s.

ABOUT THIS PRODUCT

CTSCH005.2

CAN-Bus Steering Wheel Control Interface for Chrysler, Dodge and Volkswagen vehicles. Retains steering wheel control functions, OEM phone buttons and OEM reverse camera (if vehicle is equipped)

WIRING COLOUR CODES

Purple	Right Rear Speaker +	Yellow	Permanent 12V
Purple/Black	Right Rear Speaker -	Black	Ground
Green	Left Rear Speaker +	Red	Ignition 12V
Green/Black	Left Rear Speaker -	Green	Park Brake
Grey	Right Front Speaker +	Pink	Speed Pulse
Grey/Black	Right Front Speaker -	Purple/White	Reverse
White	Left Front Speaker +		
White/Black	Left Front Speaker -		

PRIOR TO INSTALLATION

*Read the manual prior to installation. Technical knowledge is necessary for installation. The place of installation must be free of moisture and away from heat sources. Please ensure that the correct tools are using during the installation to avoid damage to the vehicle or product. **Connects2 can not be held responsible for the installation of this product.***

TECHNICAL SUPPORT

Connects2 Ltd. want to provide a fast and suitable resolution to any problems encountered during installation of this product. To get in touch with our dedicated technical support team, please fill in a ticket at support.connects2.com and provide as much information as possible.

FOLLOW US ON SOCIAL MEDIA

for all the latest updates



[/CONNECTS2](https://www.youtube.com/channel/UC...)
Watch us on
YouTube



[/CONNECTS2](https://www.facebook.com/CONNECTS2)
Like us on
facebook



[CONNECTS2LTD](https://www.instagram.com/CONNECTS2LTD)
Follow us on
instagram



[@CONNECTS2](https://twitter.com/CONNECTS2)
Follow us on
twitter



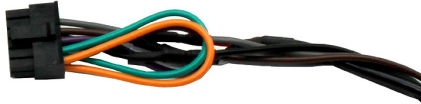
[CONNECTS2LTD](https://www.linkedin.com/company/CONNECTS2LTD)
Follow us on
linkedin



[CONNECTS2BLOG.COM](https://www.connects2.com/blog)
Follow our blog on
wordpress

FITTING GUIDE

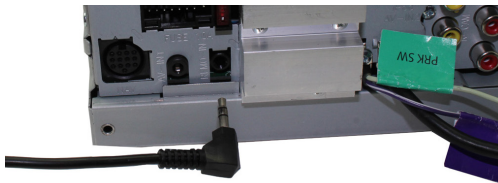
1. Remove and disconnect the original head unit.
2. Connect the 12 way molex connector of the head unit patch lead (supplied separately) to the interface.



3. Connect the opposite end of head unit patch lead to the head unit steering wheel control input on the back of the aftermarket head unit.

NB: This may be a 3.5mm jack plug or a wire input depending upon the head unit brand being fitted. Please see the head unit installation manual for further information on where to connect.

Important: This step must be completed before connecting power to the interface. Failure to so do may result in no steering wheel control function.



4. Connect the 14 way molex connector to the interface



5. Connect the male power/speaker ISO harness to the female power/speaker ISO harness from the aftermarket head unit. For aftermarket head units without an ISO connector, please refer to "Wiring Colour Codes" on Pg. 2.



FITTING GUIDE

6. Connect the yellow RCA connector from the interface to the aftermarket stereo to retain the vehicle's OEM reverse camera (if vehicle is equipped).

7. Connect the female vehicle specific connectors on the harness to the male vehicle connector from the vehicle. Test head unit for correct operation.

STEERING WHEEL CONTROL FUNCTIONALITY



SWC Functions

- 1. Track +
- 2. Mute
- 3. Track -
- 4. Volume +
- 5. Source
- 6. Volume -
- 7. Speech
- 8. Pick Up (Short Press)
Hang Up (Long Press)