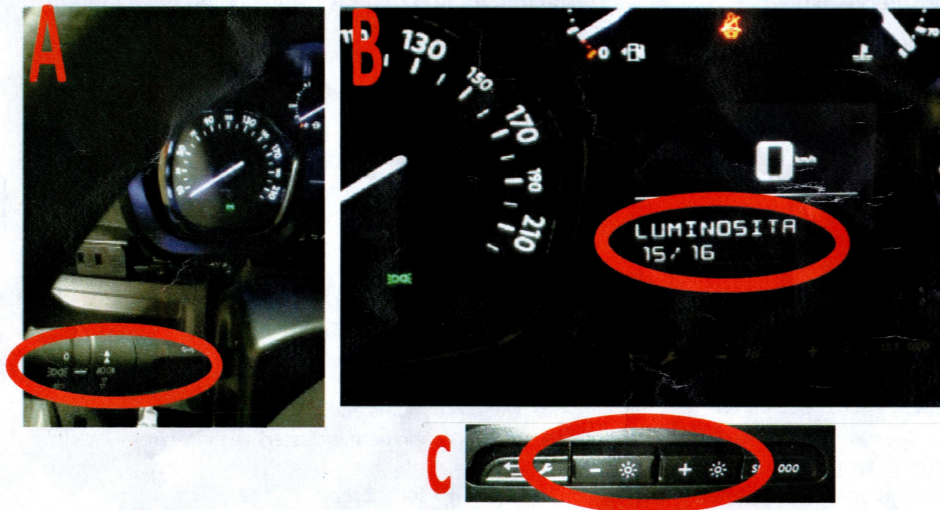


Unit of measure: you could choose between Kilometers and Miles.



Language change

In order to see which language is being used during setup, turn on the lights (Image A) and change the illumination (Image B and C).



03/2017 ALL RIGHTS RESERVED. Technical changes possible. No liability for misprints. R2

Steering wheel control interface installation kit for:

CITROEN/PEUGEOT/TOYOTA

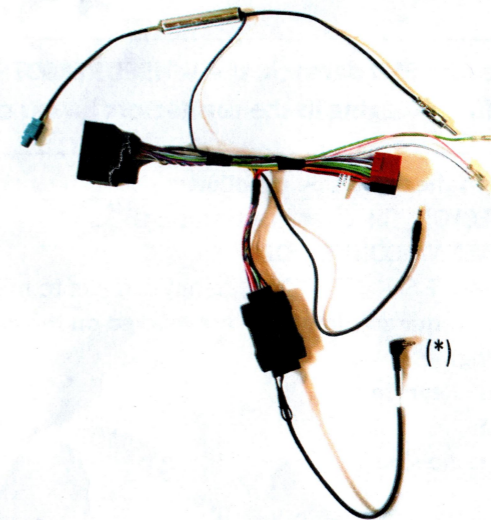
Model: Citroen Jumpy; Citroen SpaceTourer; Peugeot Expert; Peugeot Traveller; Toyota Proace; Toyota Verso;

NOTE: Only for vehicle without navigation system

Year: 2017>

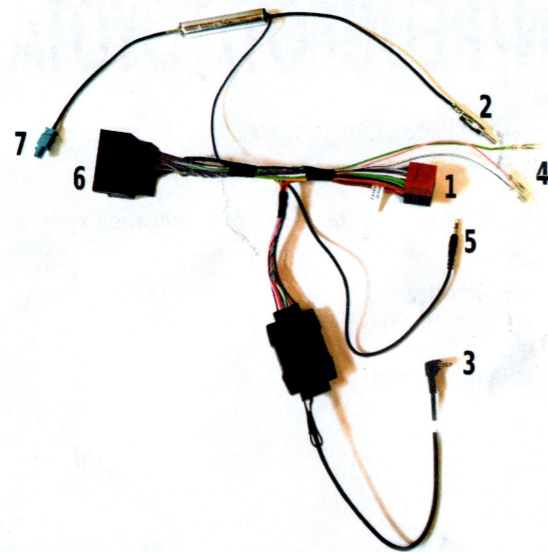
Kit content: SWC interface
wiring harness(*) if included
radio adapter
antenna adapter

Customer code:



INSTALLATION MANUAL

All installation work must be performed by a qualified professional installer only.
The manufacturer / dealer is not liable for any kind of incidental or indirect damages.



ATTENTION!

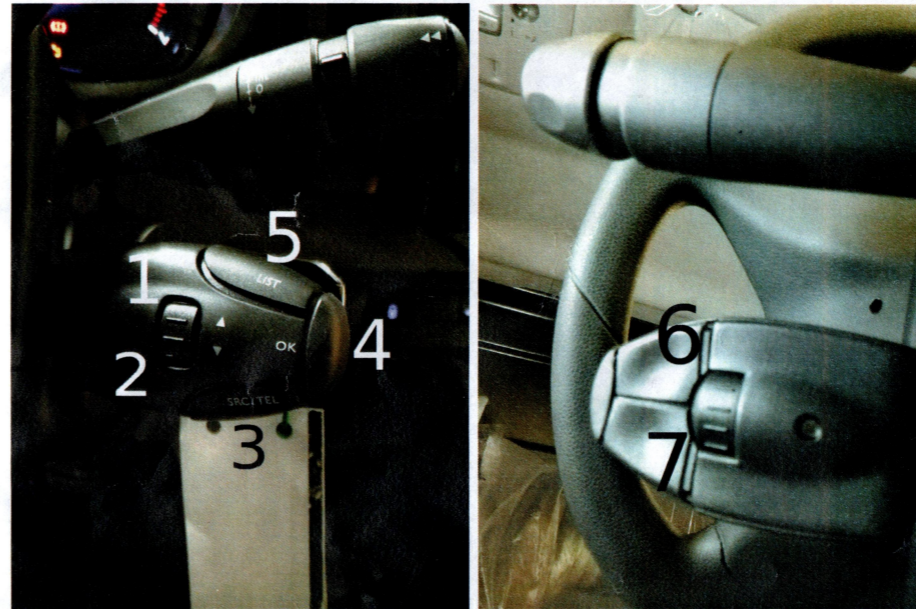
In order to prevent ESD damage, the WHEEL REMOTE JACK must be connected before plugging in the connectors on car side.

Connect cables to the radio side as follow:

- 1- to ISO CONNECTORS (black and red housings)
- 2- to RADIO ANTENNA-CONNECTOR
- 3- to WIRED REMOTE SOCKET (NOTE: do not connect to microphone socket)
- 4- to SERVICES (if required); functions are marked on the wires:
 - Green - Parking
 - Violet/White - Reverse
 - Pink - Speed
- 5- to the aux-in radio side

Connect cables to the car side as follow:

- 6- to CAR CONNECTOR
- 7- to CAR ANTENNA-CONNECTOR



The steering wheel buttons perform the following functions (if supported by the radio):

- 1- Preset-up
- 2- Preset down
- 3- Short Press (<0,5 Secs) = Source
Long Press (>0,5 Secs) = Accept incoming call *
- 4- Long Press > 2 Secs = Settings menu, enter the settings menu:
 - Language change = Press "Seek up" or "Seek down" to change the language (German, English, Spanish, French, Italian, Dutch, Polish, Brazilian, Portuguese, Turkish and Russian);
 - Unit of measure = Press "List" and choose between kilometers and miles (in some cars the Kilometers could be double due to different visualization on the cluster) as shown in the picture in the next page;
 - for exiting the settings menu press again the button n°4 for > 2 secs.
- 5- Band
- 6- Vol +
- 7- Vol -

* NOTE: depending on the radio model, the activation time of this function could take up to 3 seconds

cut along the dotted line - copy for the vehicle owner