

Wireless Charging Tray

Volkswagen

241320-50-2

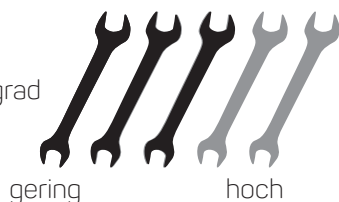


WIRELESS CHARGING

D

EINBAUANLEITUNG

Schwierigkeitsgrad



gering

hoch

GB

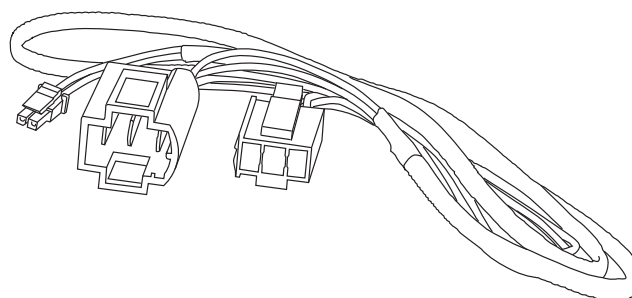
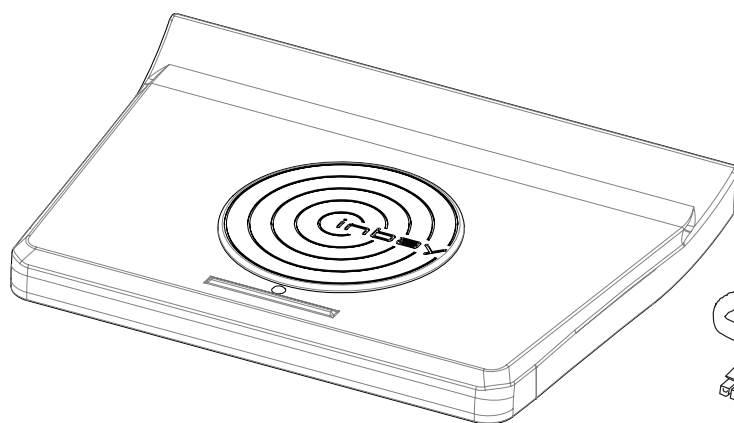
INSTALLATION GUIDE

level of difficulty



low

high



- VW Eos (1F) 05/2006-04/2015
- VW Golf V (1K) 11/2003-09/2008
- VW Golf V Variant (1K) 06/2007-10/2009
- VW Golf VI (1K) 11/2008-12/2012
- VW Golf VI Variant (1KM) 11/2009-04/2013
- VW Golf VI Cabrio (1K) 06/2011-03/2016

- VW Jetta V (1KM) 09/2005-10/2010
- VW Scirocco III (13) 08/2008->



Einbauvideo · Install video
www.inbay.systems/videos

Sachgemäße Installation unter Beachtung dieser Einbauanleitung erforderlich. Achten Sie auf korrekte Anschlüsse. Verlegen Sie die Kabel so, dass Sie weder geknickt, gequetscht oder beschädigt werden können. Sorgen Sie dafür, dass sich die Kabel nicht in Gegenständen verfangen können.

Wir können keine Haftung für Schäden übernehmen, welche durch unsachgemäße Installation oder Nutzung verursacht wurden. Verwenden Sie darum ausschließlich das mitgelieferte Montagematerial.

Technische Änderungen vorbehalten, alle Angaben ohne Gewähr.

Das „Qi“ Logo ist Warenzeichen des „Wireless Power Consortium“

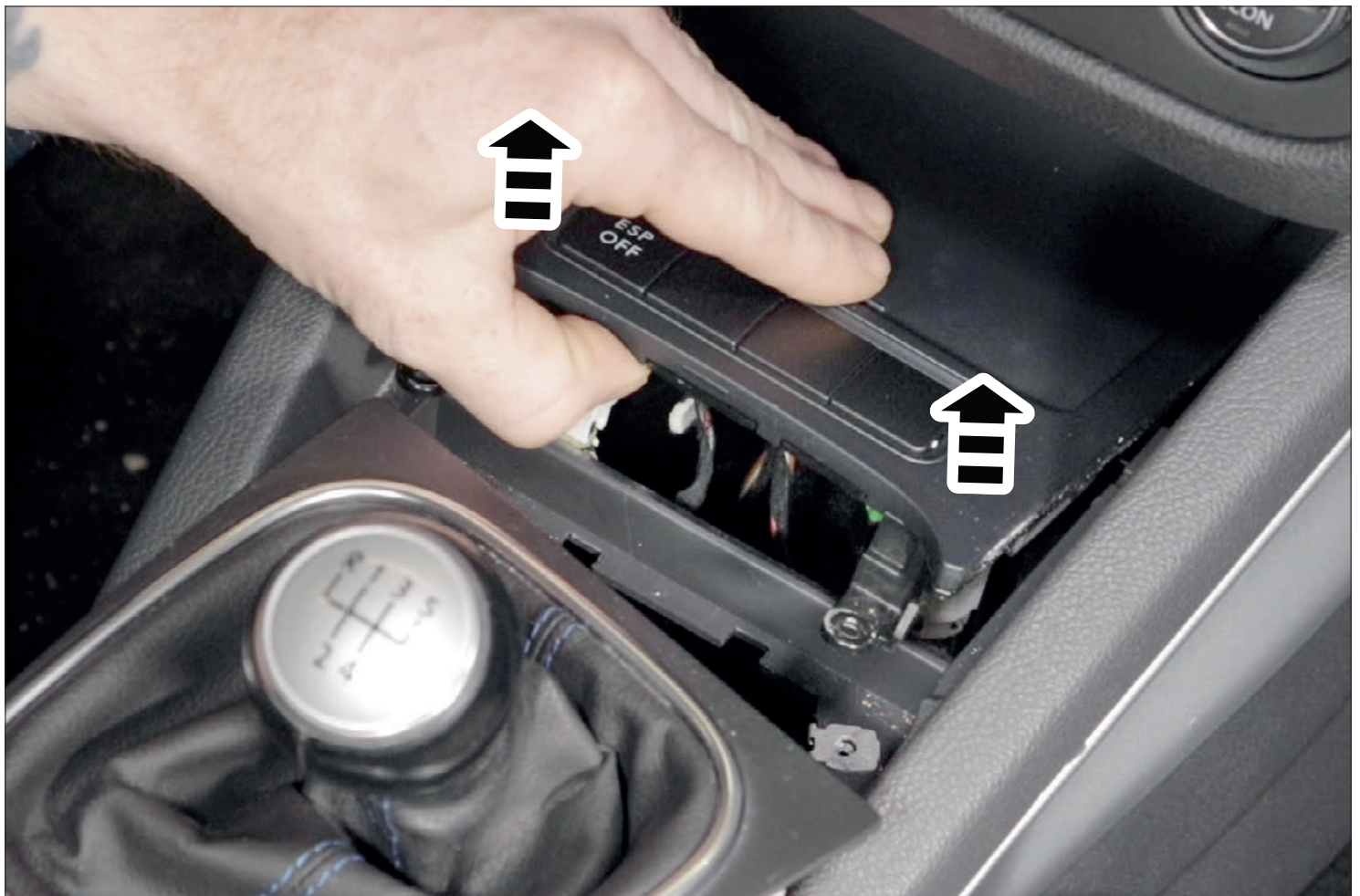
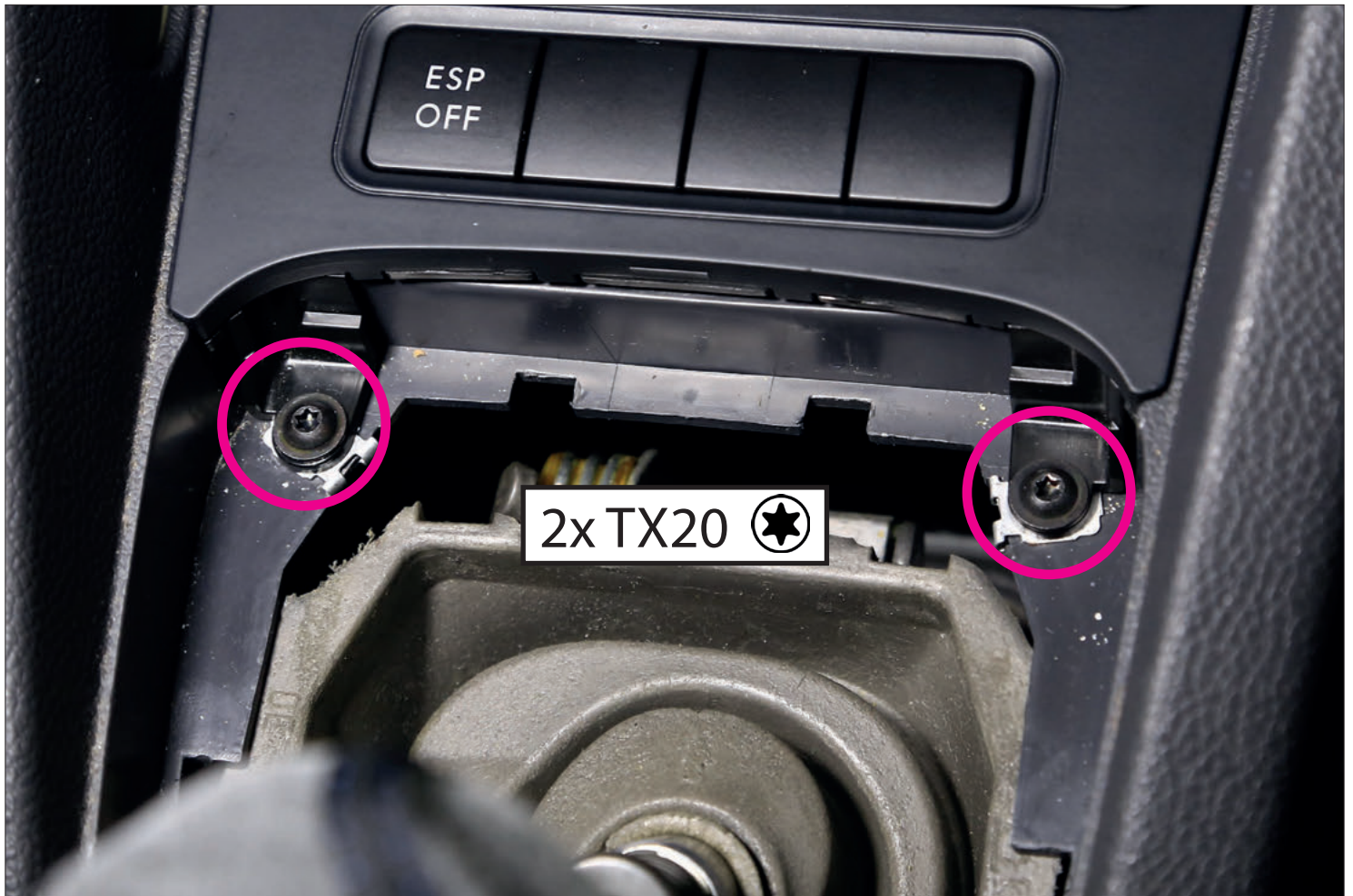
An appropriate installation in observance of these operating instructions is necessary. Please make sure the wiring is arranged so it is not bended or crimped due to the risk of cable break. Make sure that all connections are correct. Route the cable away from moving parts, do not allow the cable to be entangled, pinched or damaged in any way.

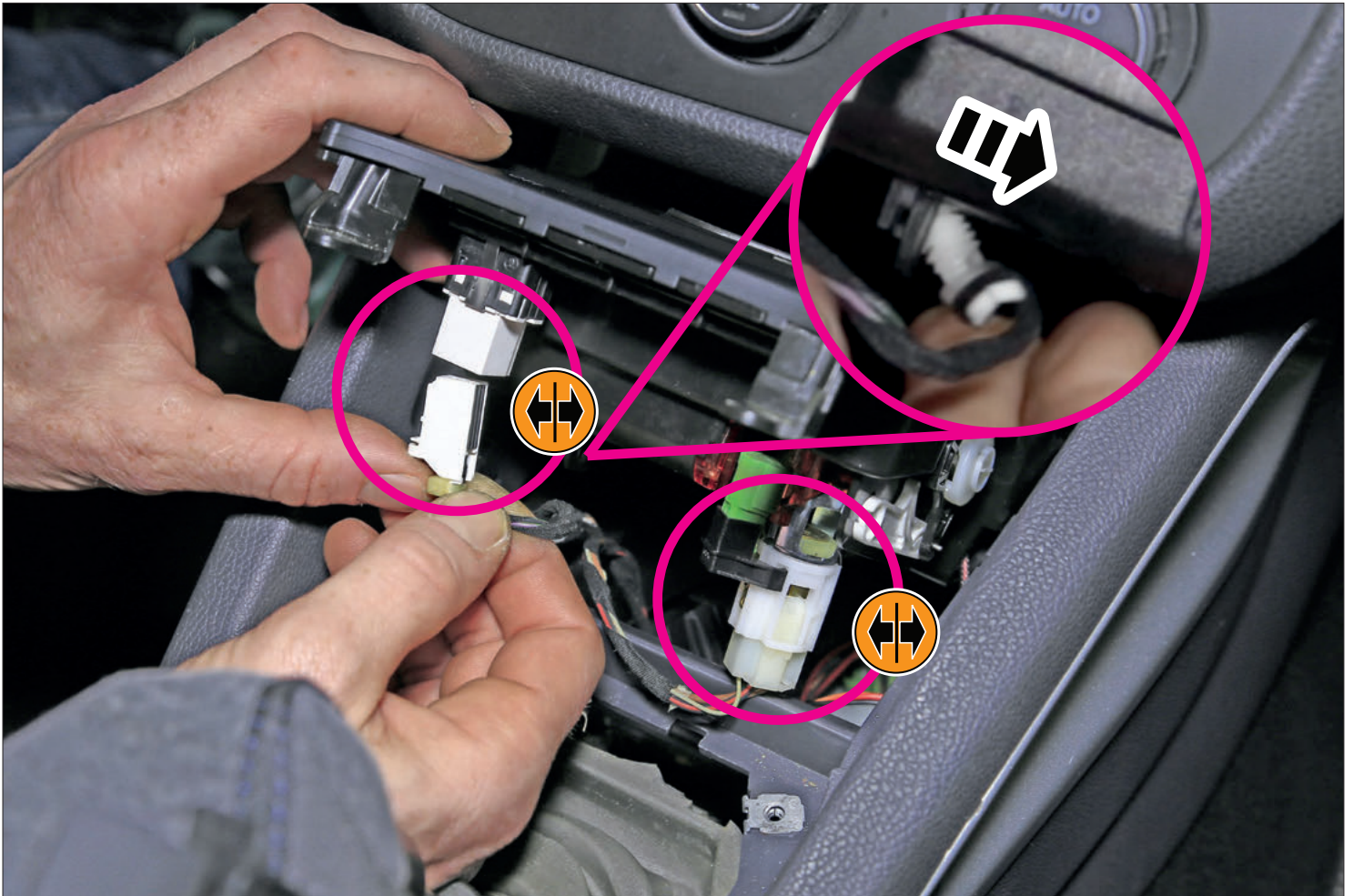
We will not be liable for damage due to improper installation or utilization. Use the specified accessory parts to prevent product failure.

Subject to technical modifications; no responsibility is accepted for the accuracy of this information.

The “Qi” symbol is a trademark of the “Wireless Power Consortium”

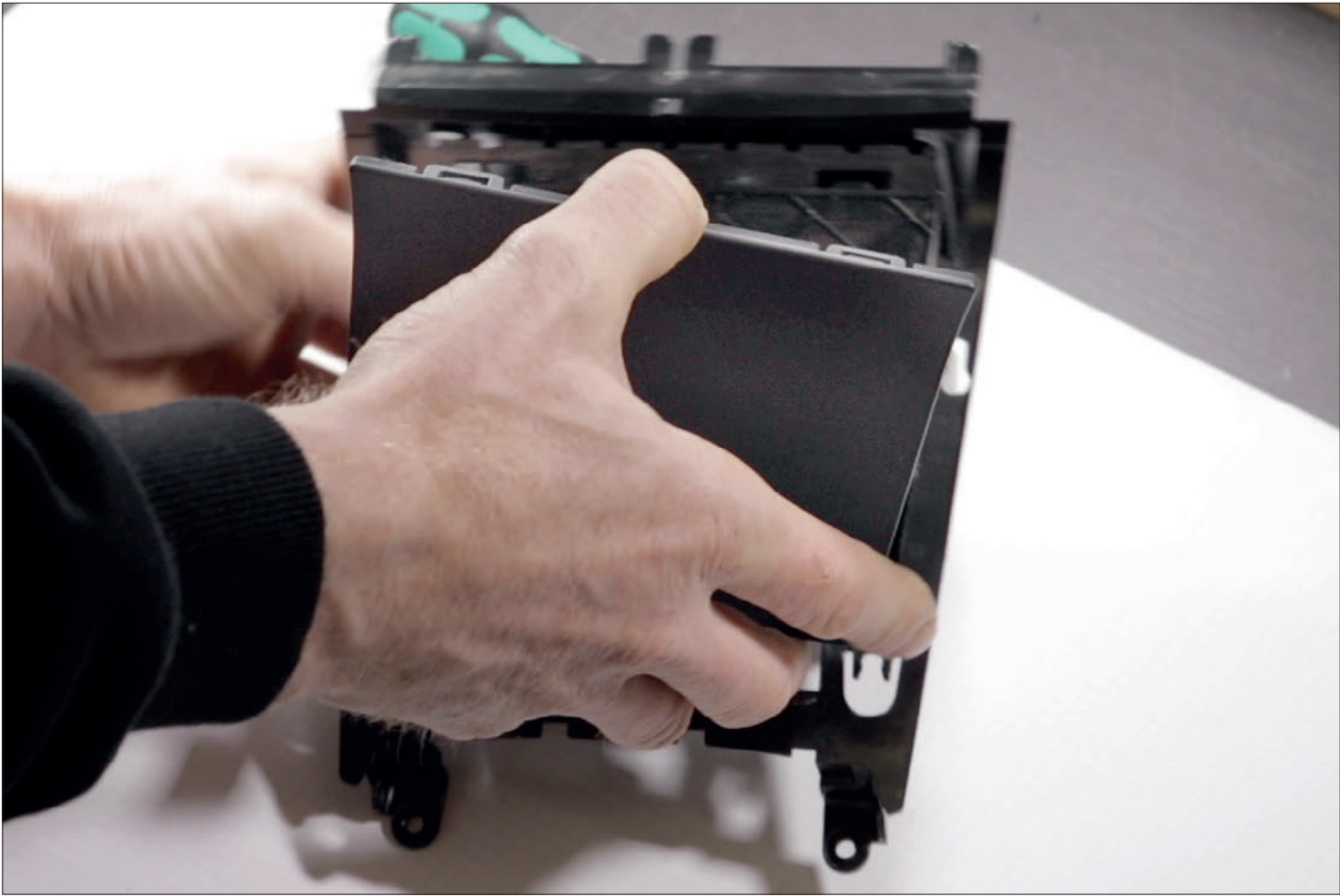




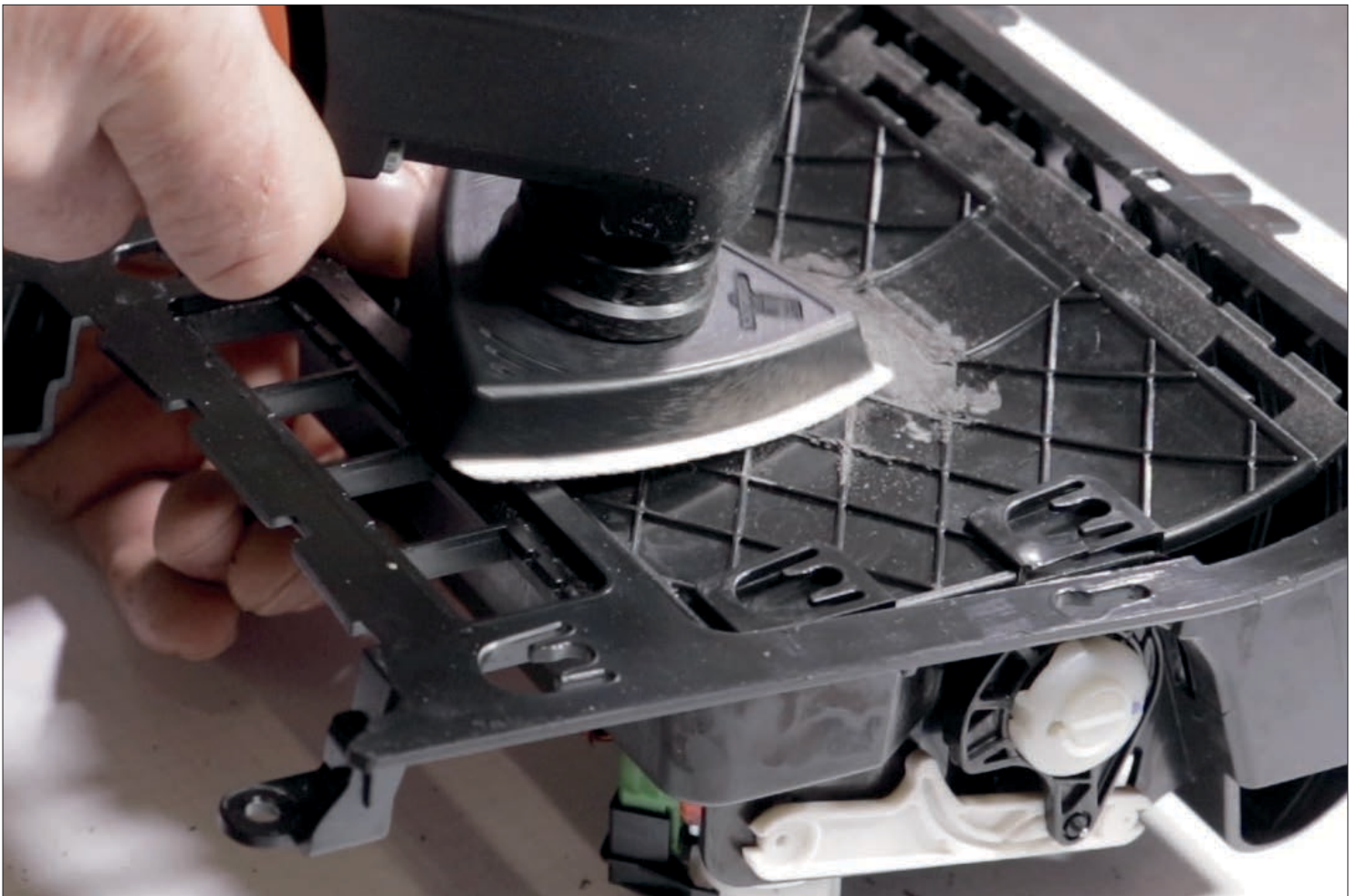


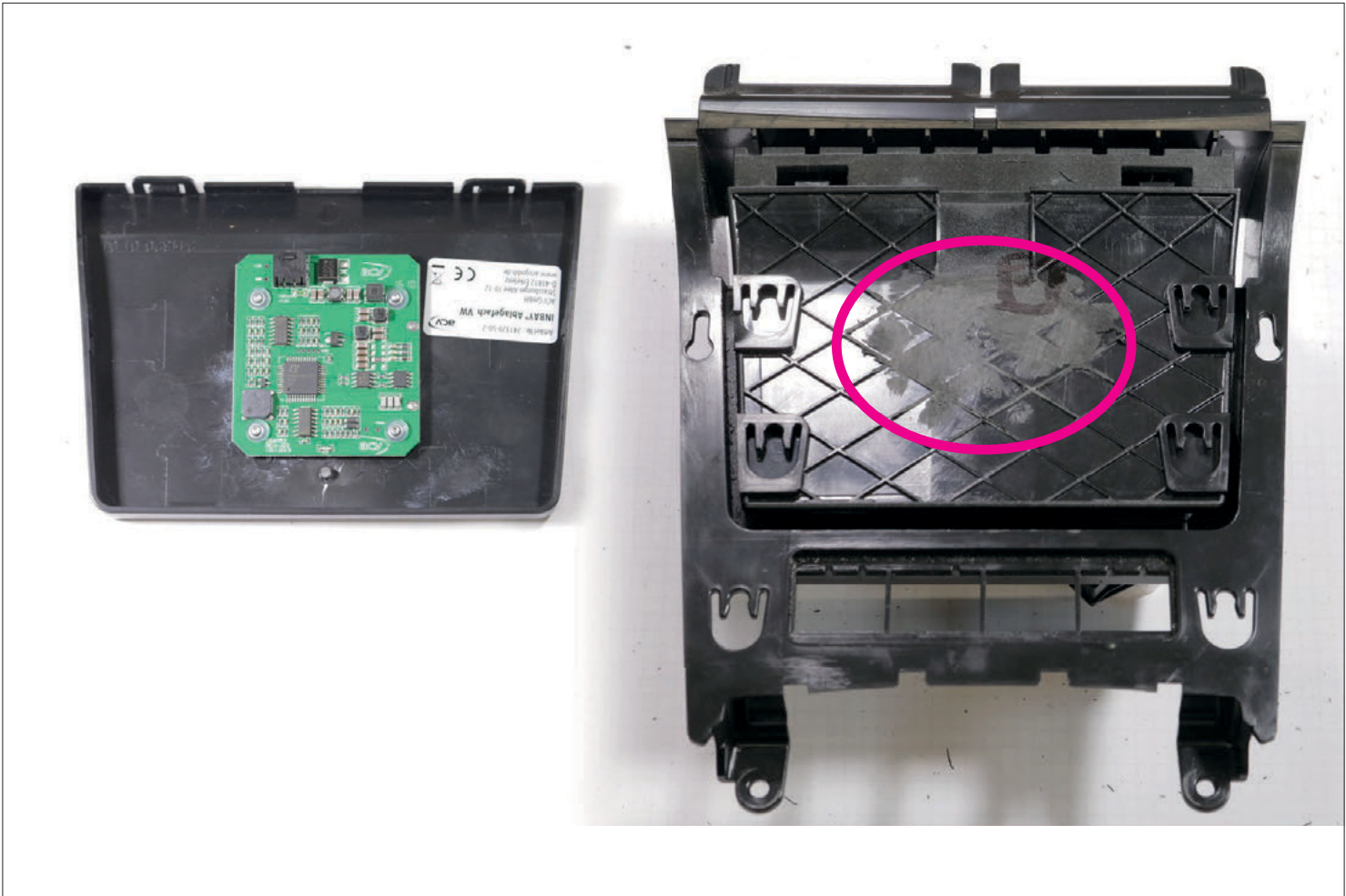


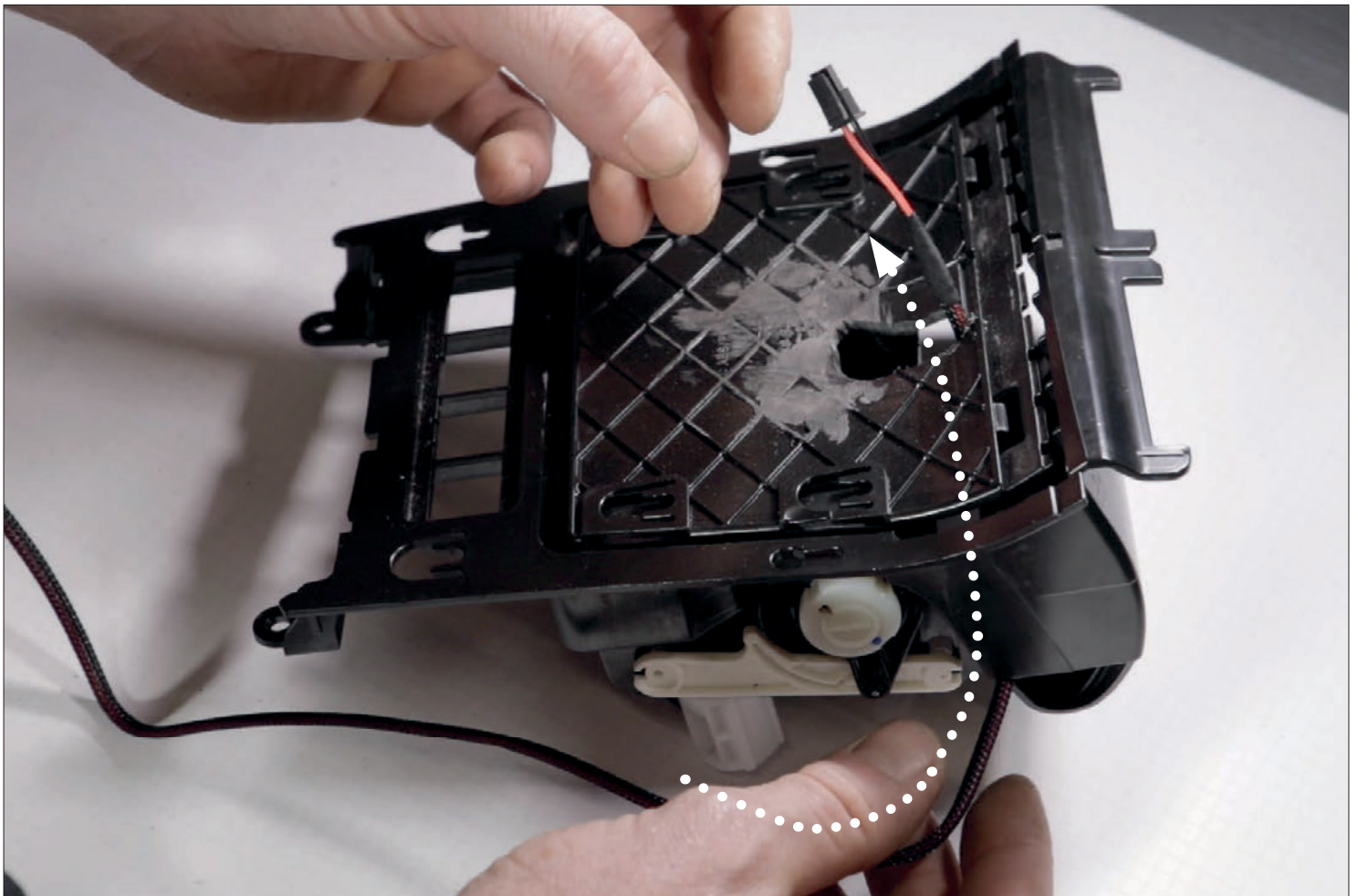
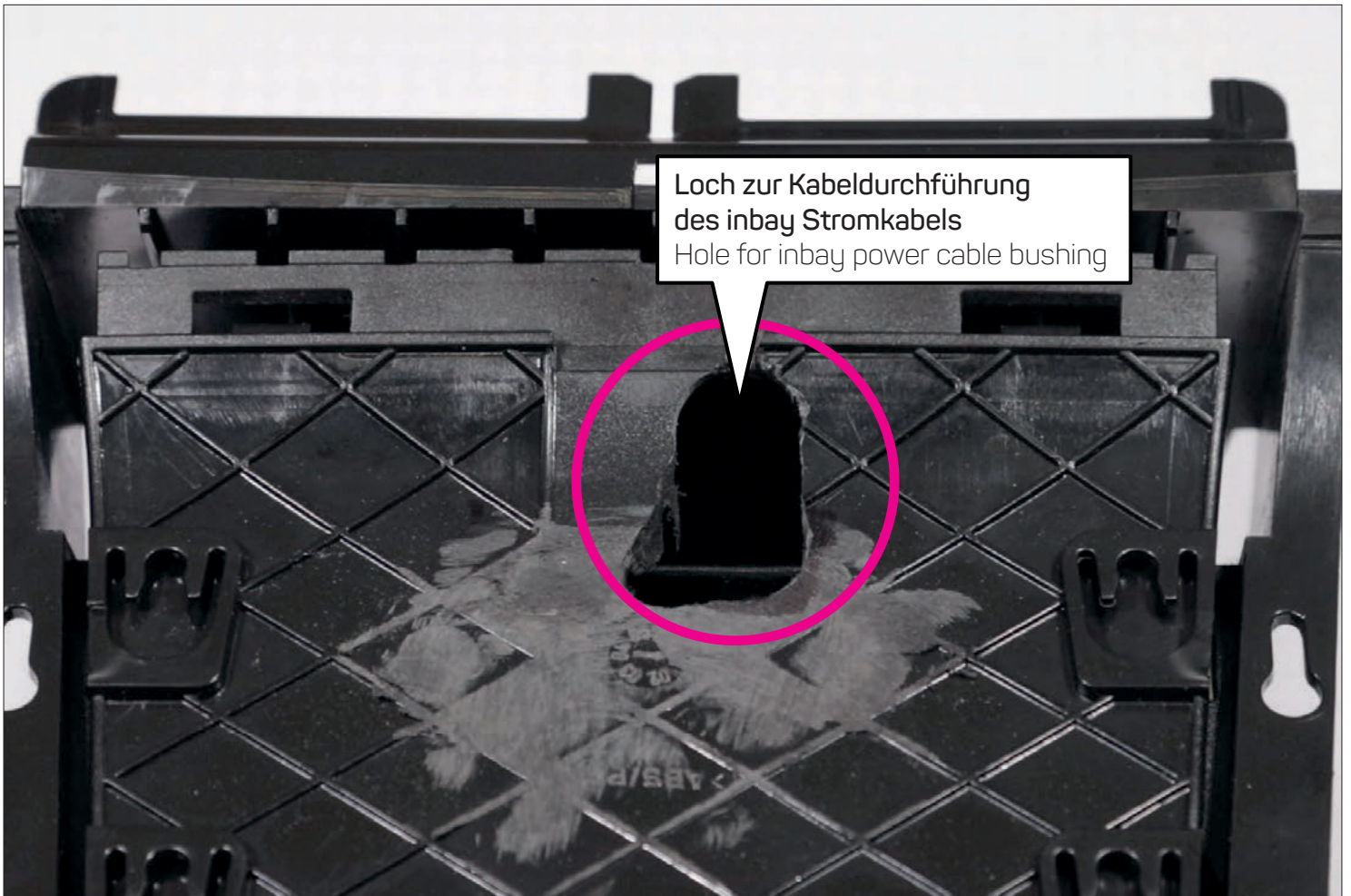


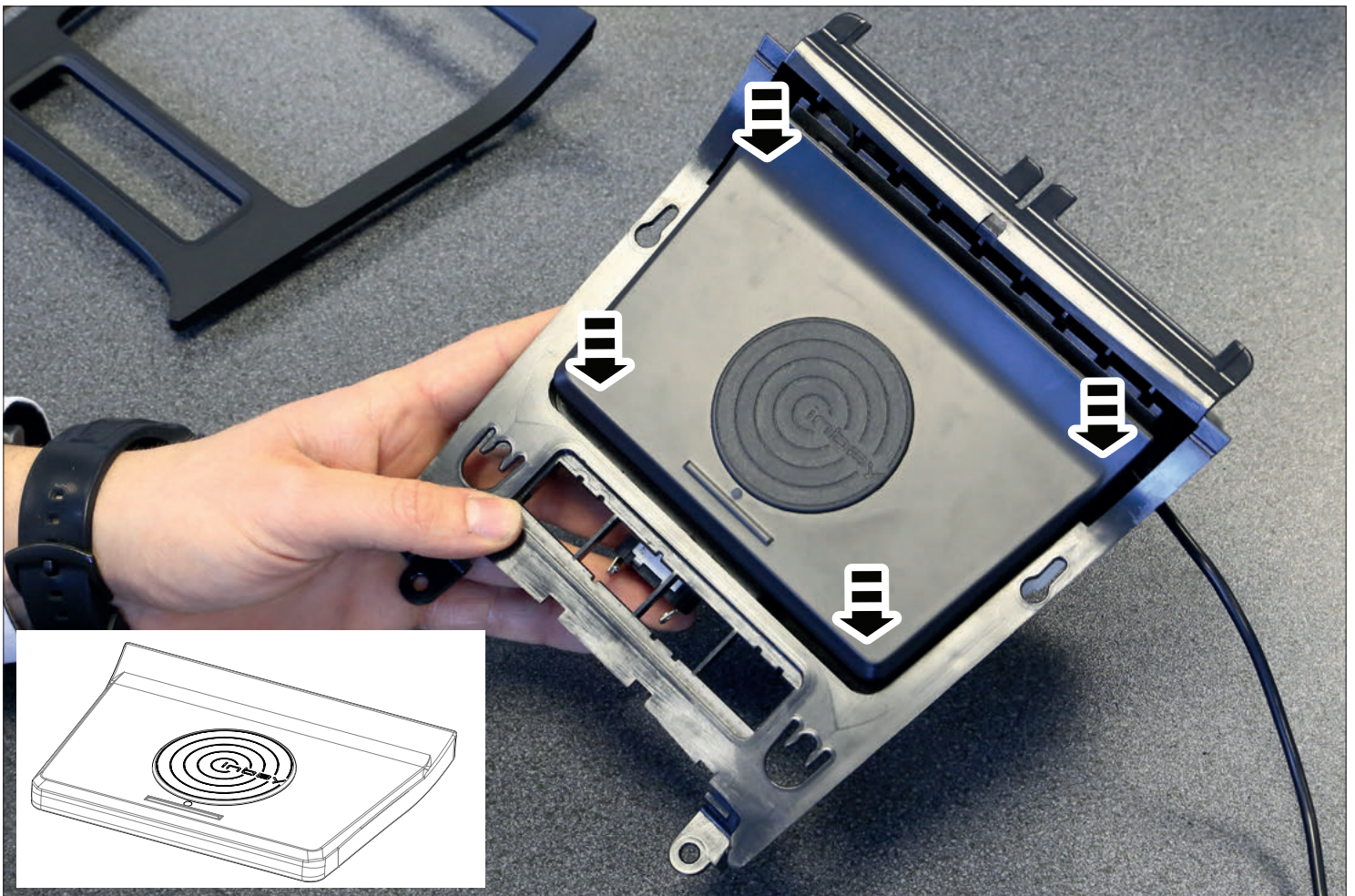
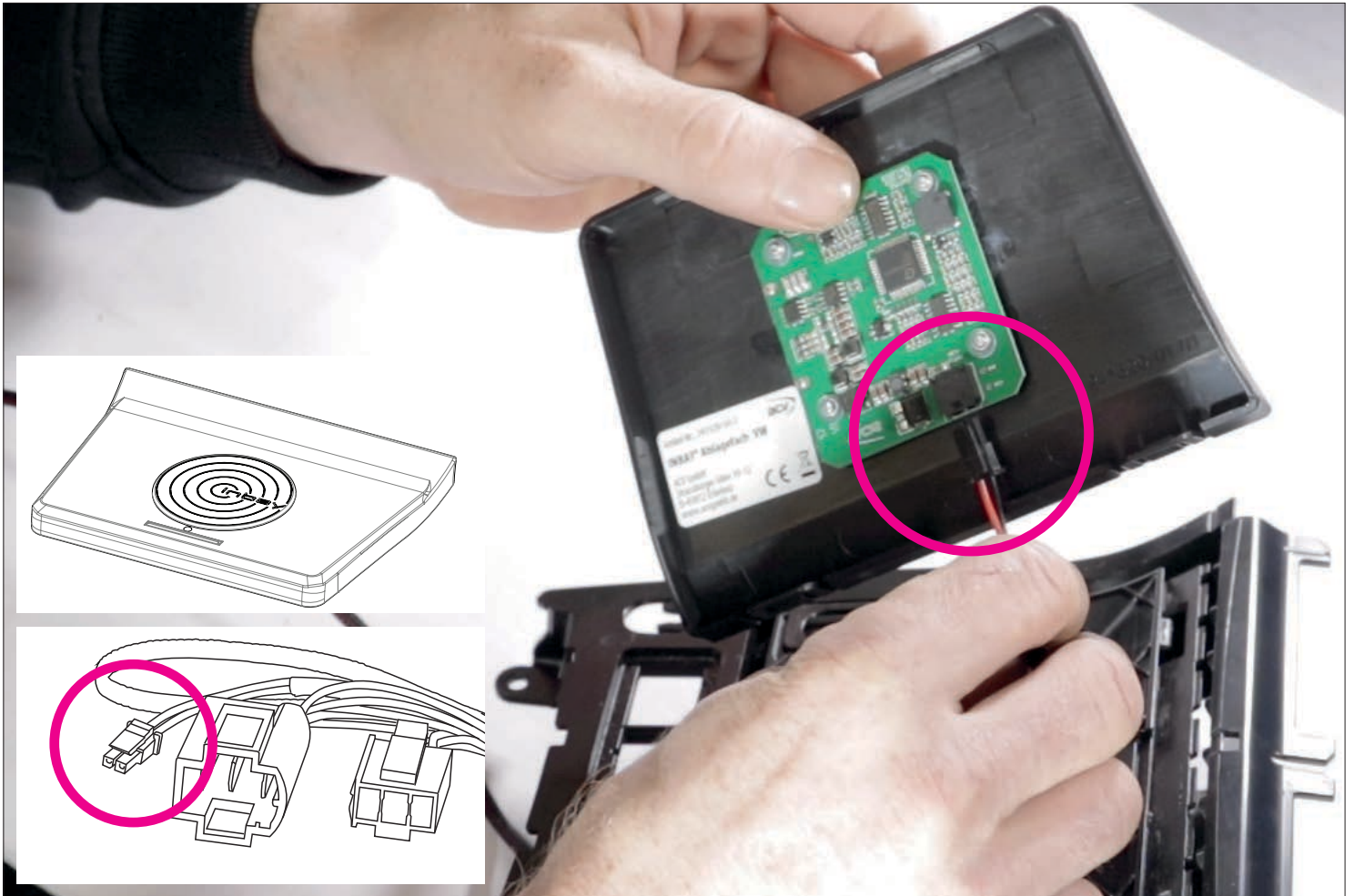


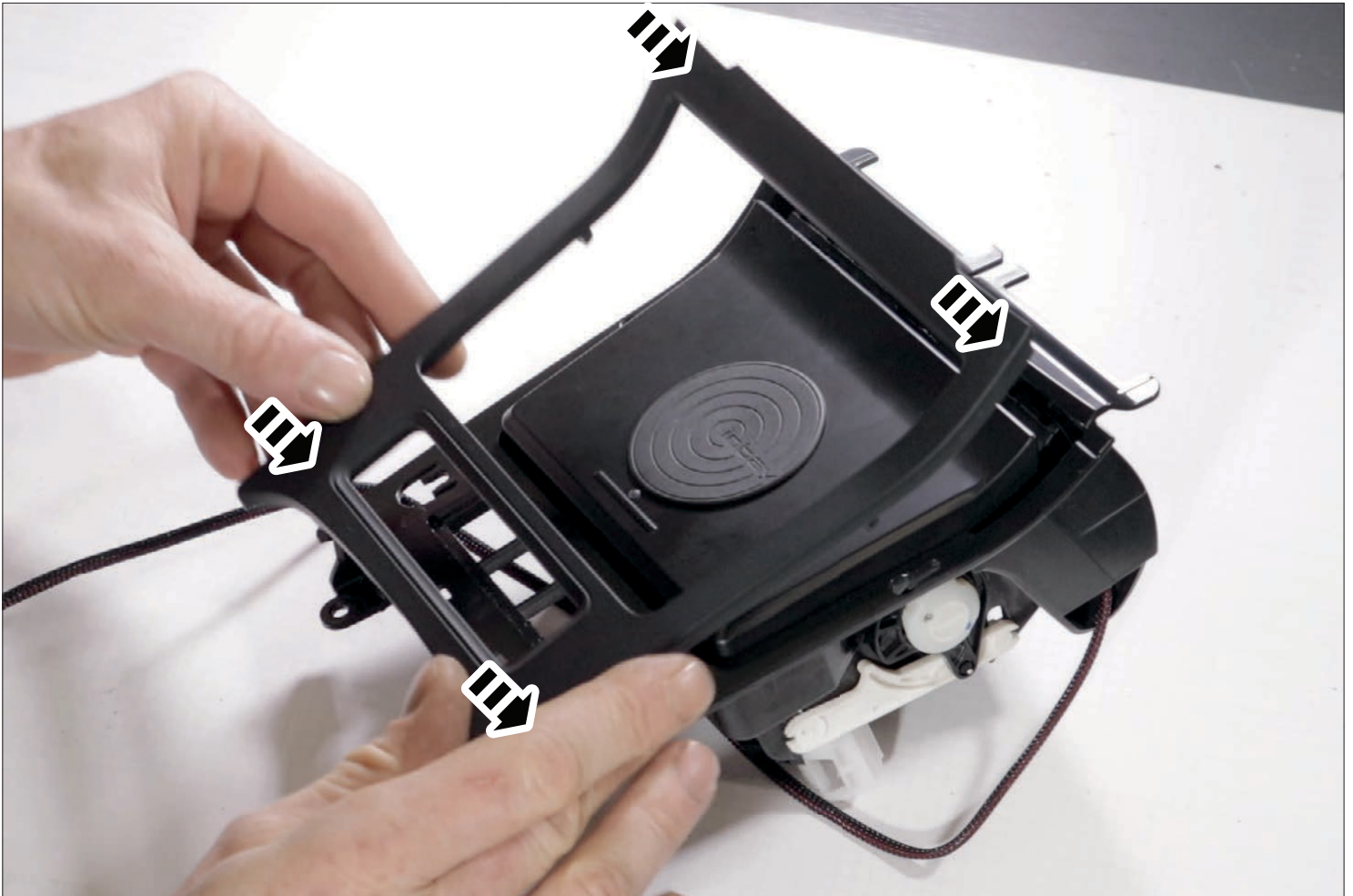
Bitte Kunststoff-Rippen entfernen, um Platz für die inbay Platine zu schaffen
Please remove plastic fins in order to clear space for PCB

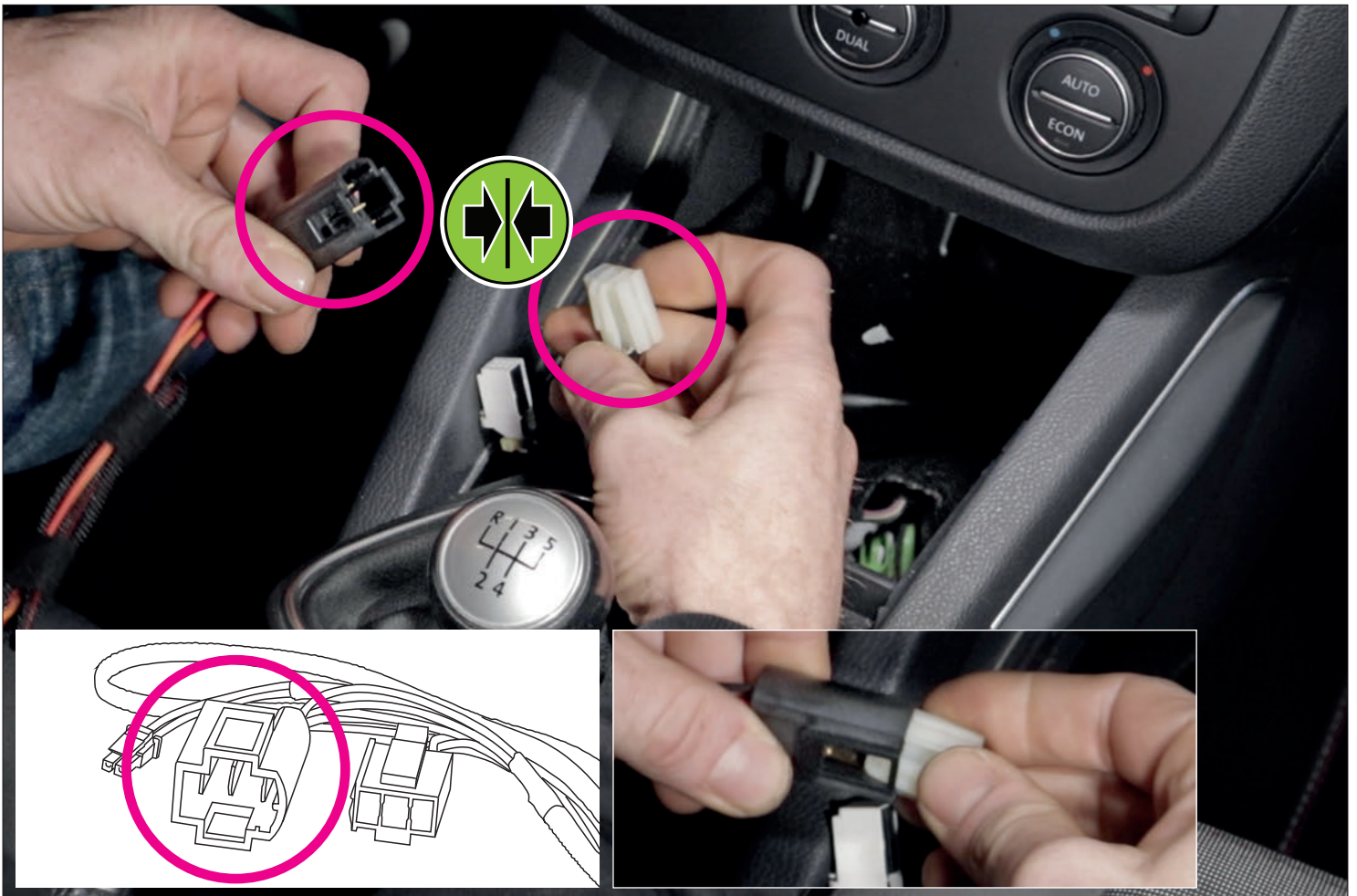
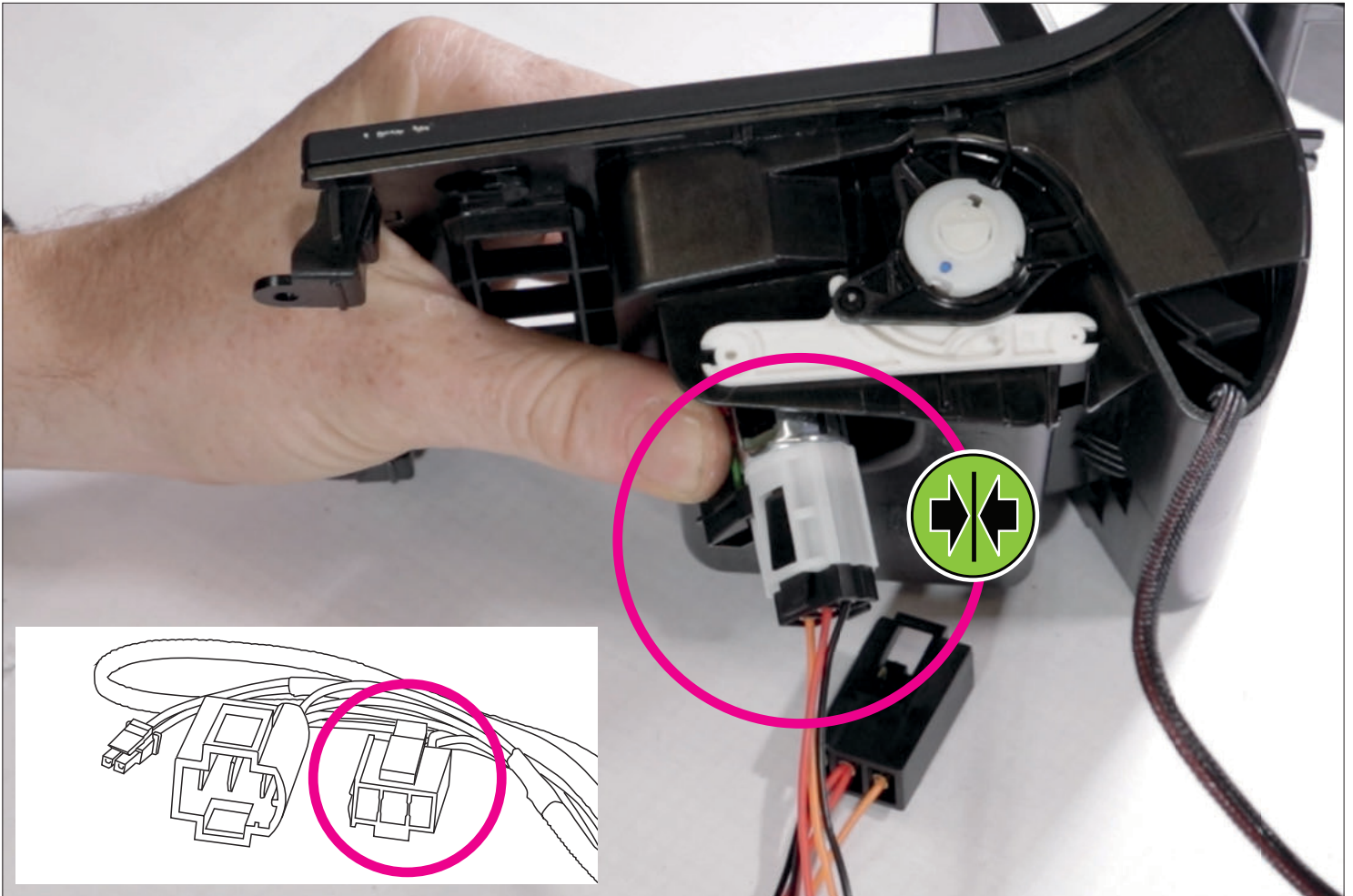


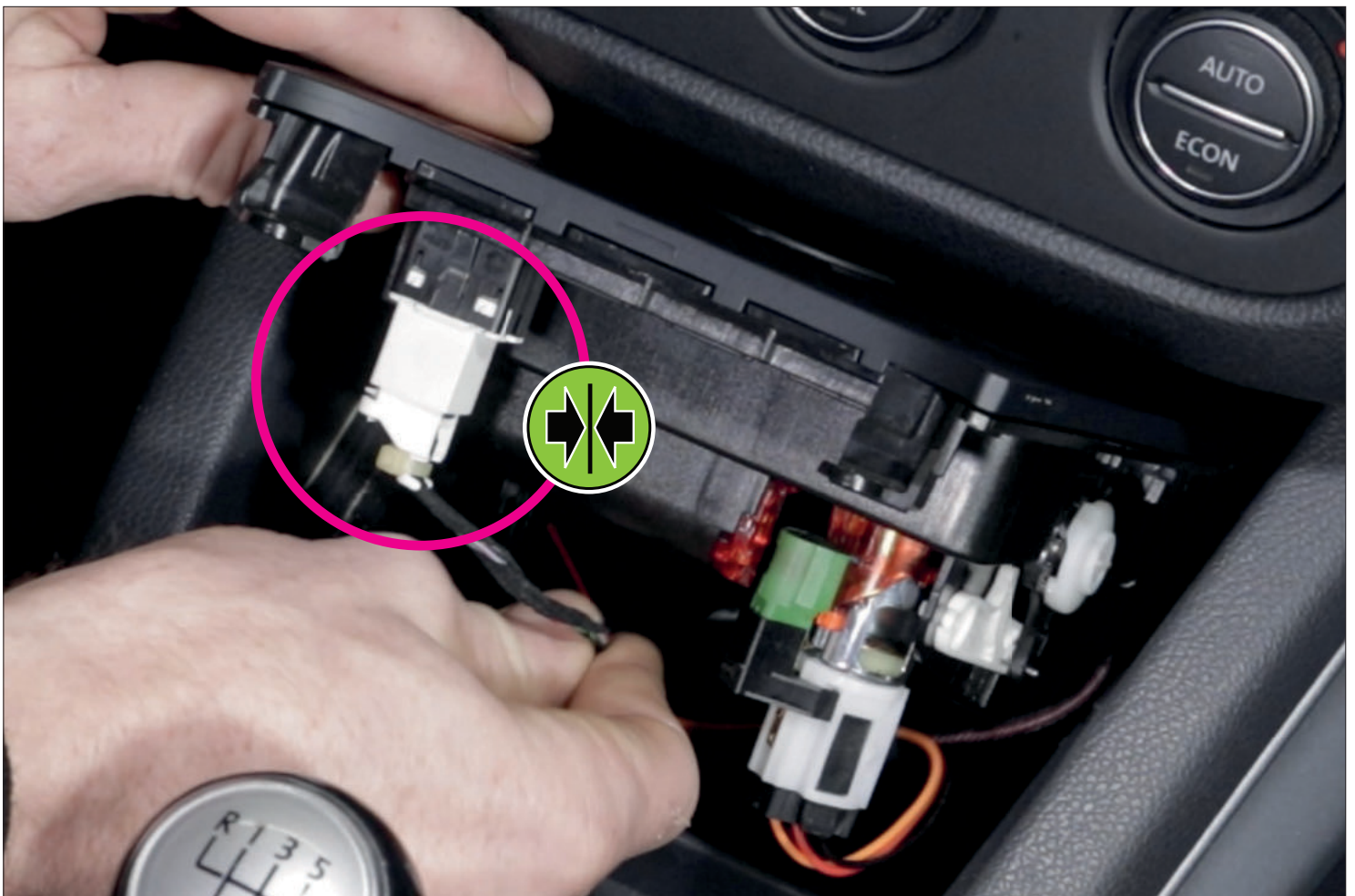


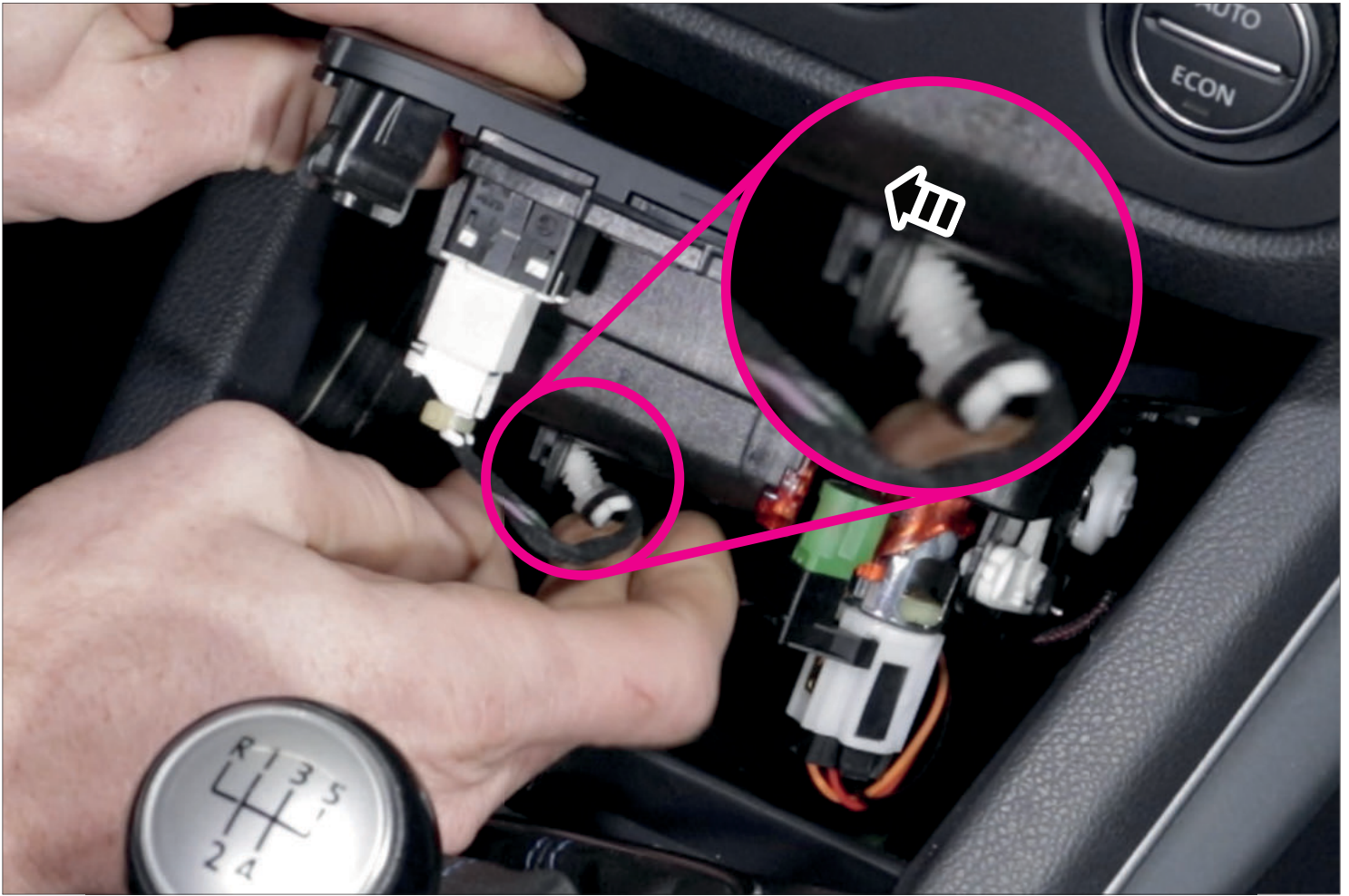


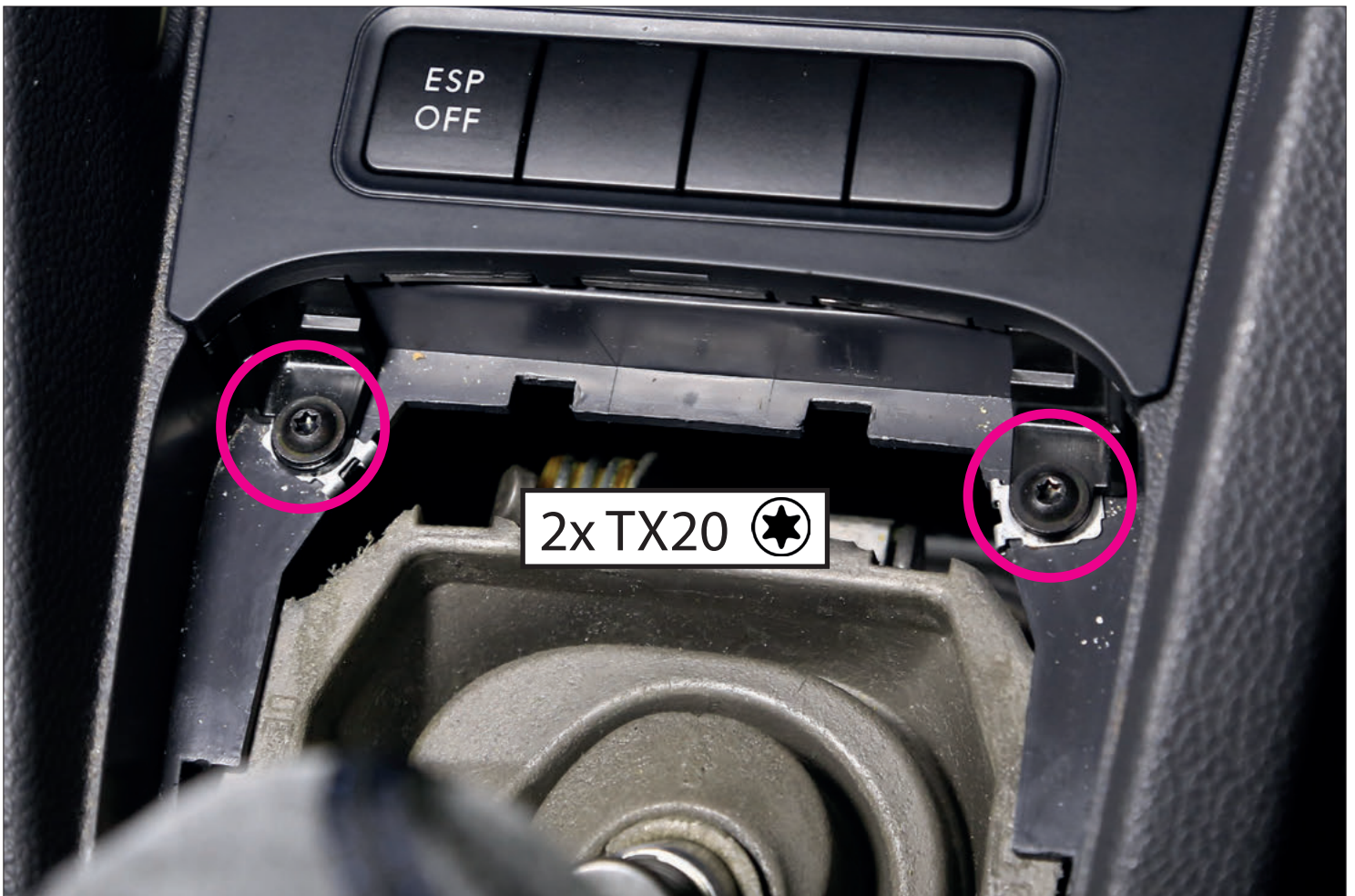

















LED rot
LED red



standby



LED blau
LED blue



